

A PROJECT BY



**SRI
HAVENS**
LUXURY HOMES @ KISMATPUR



**A HOME
BEYOND
EXPECTATIONS**



2 & 3 BHK PREMIUM RESIDENTIAL APARTMENTS
TS RERA NO: P02400004634



A FRIENDLY, ACTIVE LIVING COMMUNITY

Embrace exclusivity the moment you enter your secluded apartment with no-common walls, yet stay social and connected the moment you step out. At SRIHAVENS, you can experience the all-round security of a close-knit community and also avail everything you could want from a friendly, active living set up. From fresh new experiences through camaraderie with like-minded neighbours to celebrating memorable moments and indulging in leisure activities, the integrated community infrastructure makes urban lifestyle stress free and special.

**SRI
HAVENS**
LUXURY HOMES @ KISMATPUR

**3 PREMIUM
BLOCKS**

**53
FLATS**

**40% OPEN
SPACE**

**FULLY SECURED
GATED COMMUNITY**

**2&3 BHK LUXURY
APARTMENTS**

MASTER PLAN

SRI HAVENS
LUXURY HOMES @ KISMATPUR



LEGEND

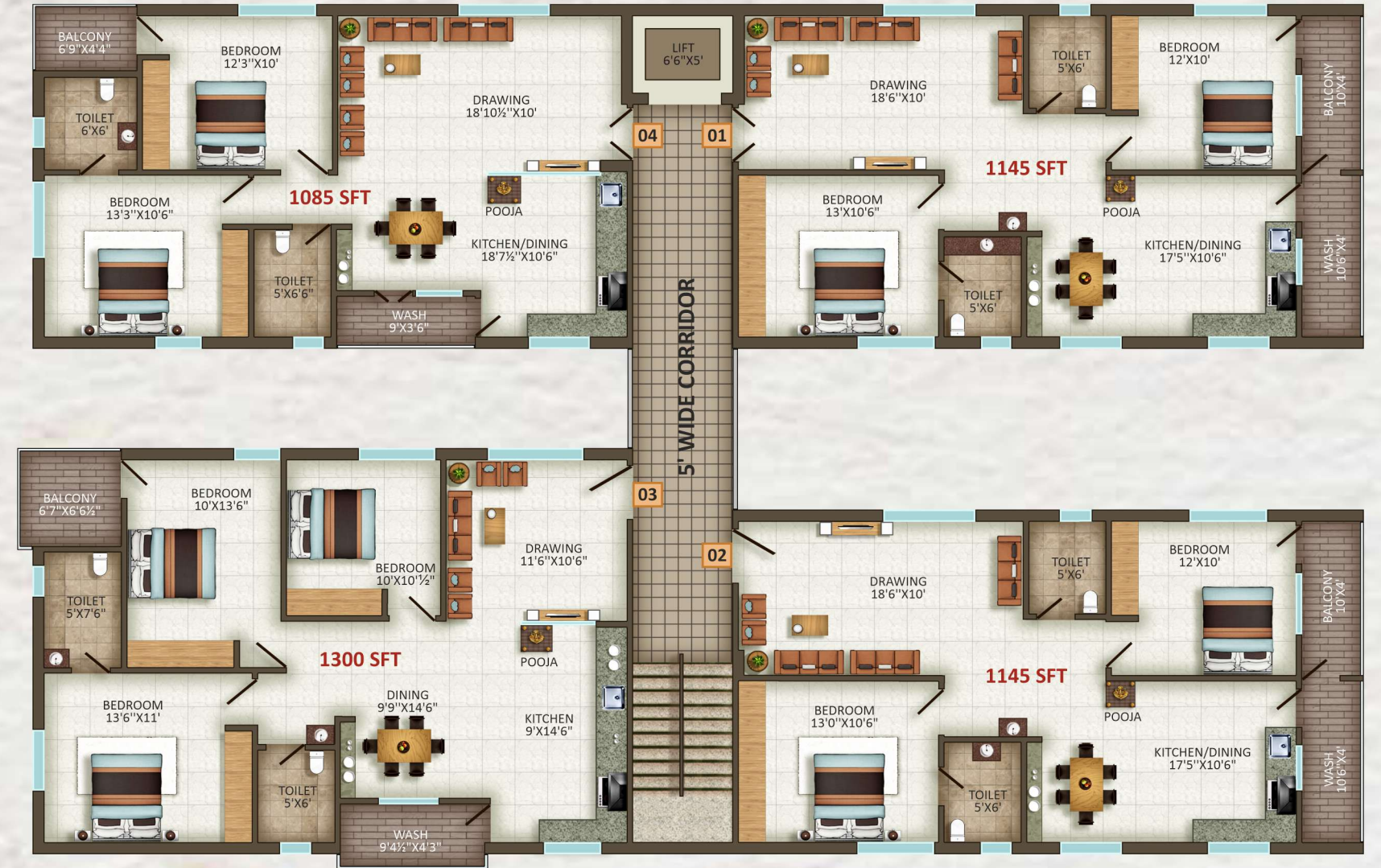
- | | | |
|---------------------|------------------------------|--------------------------|
| 01 ENTRY GATE | 07 WALKING / CYCLING TRACK | 13 ELDERS PARK |
| 02 WATCH MAN ROOM | 08 BLOCK B | 14 EXIT GATES |
| 03 KIDS PLAY AREA | 09 TOT-LOT | 15 WATCH MAN ROOM -2 |
| 04 BLOCK A | 10 MODERN GYM | 16 ELDERS PARK -2 |
| 05 LANDSCAPE PARK | 11 DRIVE WAY | 17 MULTI PURPOSE COURT |
| 06 PARTY HALL | 12 BLOCK C | 18 SUPER MARKET |

PROJECT FEATURES

- BJMC & RERA Approved Project
- Stilt + 5 Floors Configuration
- 2&3 BHK Luxury Units
- 1025 sft to 1425 sft
- Airy and Spacious Rooms
- Large Balconies
- Quality Construction
- Strategic Location, Amidst Large Villa Communities
- Premium Fixtures & Fittings
- No Common Walls
- Vastu Compliant
- Gym and Play Areas
- Modern Amenities
- Branded Lifts
- Adequate Water Supply
- Trendy Landscaping
- Generator Power Backup
- 24X7 Security and CCTV Surveillance



BLOCK-A



BLOCK-B

RHYTHMIC DESIGN FOR LIFESTYLE NEEDS OF DIVERSE FAMILIES

Behind the breathtakingly beautiful facade is clever space planning that unlocks the potential of comfortable living at SRHAVENS. The core focus of floor plan lies in nurturing a pleasant environment while creating an array of independent yet living, breathing apartments.

BLOCK-A AREA STATEMENT IN SFT

FLAT NO	01	02	03	04	05
TYPE	2 BHK	2 BHK	2 BHK	3 BHK	3 BHK
FACING	NORTH	NORTH	NORTH	EAST	EAST
SBA	1025 SFT	1025 SFT	1025 SFT	1425 SFT	1425 SFT



BLOCK-B AREA STATEMENT IN SFT

FLAT NO	01	02	03	04
TYPE	2 BHK	2 BHK	3 BHK	2 BHK
FACING	WEST	WEST	EAST	EAST
SBA	1145 SFT	1145 SFT	1300 SFT	1085 SFT

SRI HAVENS
LUXURY HOMES @ KISMATPUR



BLOCK-C
AREA STATEMENT IN SFT

FLAT NO	01	02
TYPE	2 BHK	2 BHK
FACING	EAST	NORTH
SBA	1230 SFT	1270 SFT



**A WELCOMING
LIFESTYLE FOR
ENRICHED
WELL-BEING**

SRIHAVENS is a treasure trove of lifestyle amenities. As much as it showcases luxury on the outside, the one of its kind gated community also keeps exquisite indulgence from prying eyes. Delve deeper in your leisure moments and you can discover a range of pastimes. From a modern gym and an array of game facilities to special purpose hall for celebrating special moments such as birthdays and holidays, it's no secret for privileged residents to make the most of exclusive amenities and just in the moment!



SRI HAVENS

LUXURY HOMES @ KISMATPUR



GYM



ELDERS
PARK



COMMUNITY
HALL



MULTI PURPOSE
COURT



CHILDREN'S
PLAY AREA



CCTV CAMERAS




SUPER MARKET

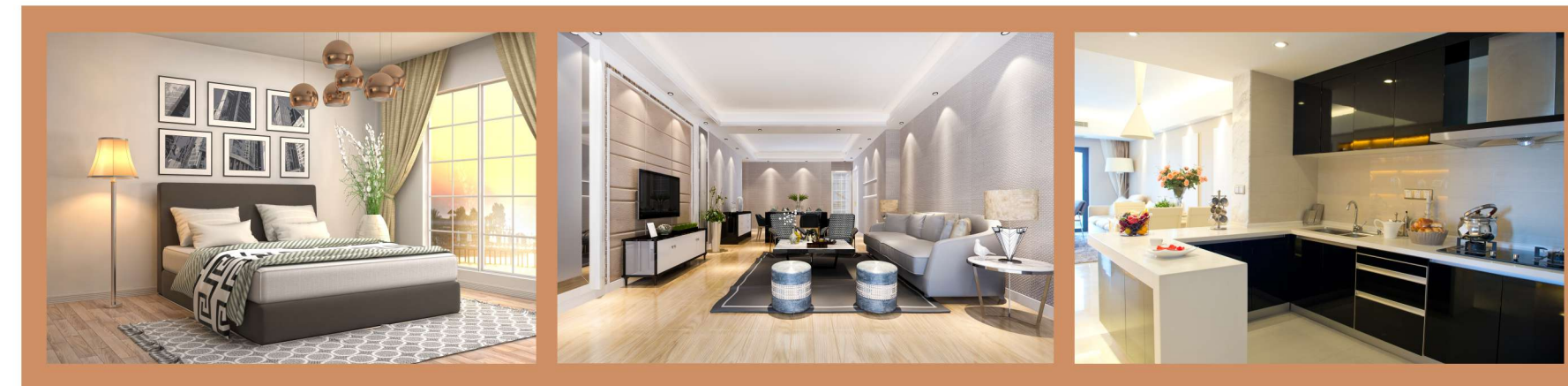
A M E N I T I E S







ELEMENTS & CRAFTSMANSHIP CREATE VISUALLY SUPERIOR NARRATIVE



-  **FRAME WORK**
RCC framed with earthquake-resistant loads
-  **SUPER STRUCTURE**
9" External walls & 4.5" Internal walls with Red bricks.
-  **WALL FINISHES**
 - Premium emulsion with putty finish for interior walls and ceiling of premium brand Premium emulsion or emulsion with luppam of textured final for exteriors, as per architectural specifications.
 - Polish for main door and enamel paint for all other doors.
-  **DOORS**
 - Teak wood frame with teak veneer shutter for main door, All frames of teakwood in bedroom. Internal door molded flush doors with good quality hardware & locking system.

The vivacious layering of the best of elements creates the visually superior narrative of the entire SRIHAVENS. Each material is selected for its durability and beauty with emphasis on appearance to suit the theme of the project. With a view to keep every part of the community appealing and alive, only the best of brands have been selected that truly take things to the next level. Colour is utilised masterfully throughout with a subtly shifting palette. Finally, intricate and exquisite detailing is achieved by craftsmanship that puts class before everything else.



-  **KITCHEN**
 - Granite platform with stainless steel sink with provision for both municipal and bore water connection with provision for fixing water-purifier.
 - Ceramic tile dado up to 2" height above kitchen granite platform.
 - Provision for fixing exhaust fan or chimney.
-  **FLOORING**
 - Granite flooring at lobbies and anti-skid vitrified tiles in common areas.
 - 2x2 vitrified tiles in hall, dining and remaining Glazed ceramic tile dado upto 6'height in all bathrooms of reputed brand.
-  **WINDOWS**
UPVC sliding frames with floated glass
-  **WATER PROOFING**
For all toilets and wash areas.
-  **GRILLS**
M.S. Safety grills for windows aesthetically designed
-  **TOILETS**
EWC of reputed make. Wash basins in dining area and master toilet of reputed make. Single lever fixtures with wall-mix re-cum shower CPVC pipes for plumbing of premium make.

SPECIFICATIONS & DETAILS

-  **ELECTRICAL**
 - PVC insulated wires of premium make.
 - Power outlets for geyser in all bathrooms.
 - Power plug for cooking range, chimney, refrigerator, microwave ovens, mixer/ grinders in kitchen.
 - Plug points for refrigerator and TV wherever necessary.
 - 3 phase supply for each flat and individual meter boards, AC point in all bedrooms.
-  **POWER BACKUP**
100% DG back-up for common areas, motors and lifts.
-  **COMMUNICATIONS**
Provision for telephone points and internet & cable connection
-  **LIFT**
Automated lift of reputed make.
-  **PARKING**
Covered parking space.
-  **SOLAR POWER FENCING**
Solar power fencing all around the compound.

A FEW MINUTES STROLL
FROM KISMATPUR -
IN THE SHADOW OF ORR



Location Map
(Not to Scale)

SRI HAVENS

LUXURY HOMES @ KISMATPUR

NEIGHBOURHOODS (APPROX. LANDMARKS WITH DISTANCES)

CRAYONS HOSPITAL	: 2 MINS	TSPA JUNCTION	: 5 MINS	PREMIER HOSPITAL	: 10 MINS	KENDRIYA VIDYALAYA	: 13 MINS
TIME SCHOOL	: 3 MINS	GLENDALE ACADEMY	: 5 MINS	BHASKAR MEDICAL COLLEGE	: 12 MINS	SREENIDHI INT. SCHOOL	: 13 MINS
SHADAN MEDICAL COLLEGE	: 5 MINS	SUNCITY NURSING HOME	: 6 MINS	VASAVI ENGG. COLEGE	: 12 MINS	MEHIDIPATNAM	: 15 MINS
BUDVEL IT CLUSTER	: 5 MINS	MRUGAVANI NATIONAL PARK	: 8 MINS	OLIVER HOSPITAL	: 12 MINS	CBIT	: 20 MINS



ONE MAN, MANY ACHIEVEMENTS

Mr. Gunji Murali graduated in Civil Engineering from NIT, Warangal. He was selected as an Engineer in a central government institution (at Ranchi, Jharkhand) through campus selection. He was a proud member of the team at the Rourkela Steel Plant that introduced continuous casting, the first of its kind technology in India to produce steel 24 hours a day.

Later, he worked as a Principal Engineer in the construction of the Karbude Tunnel, second longest railway tunnel near Ratnagiri located on the Konkan Railways in India and completed it in record time, for which he received the Best Engineer Award from Mr. E.Sreedharan, the father of the Indian Metro Railway. Subsequently, he worked as a Senior Engineer at Gammon India Ltd., for Mumbai-Worli Sea Link (the longest sea bridge in India).

While working as a Structural Engineer in the construction of the Almatti Dam Spillway, he received the Best Engineer award from the Mumbai Builders Association. In 1997, he worked as an In-charge Engineer for 27 bridge structures under construction at Putrajaya, the new administrative capital of Malaysia.

He ventured into the booming software industry by working as Consultant for Citi bank in London, and then moved to HP, USA as Software Consultant. While working as a Project Manager at Wipro, he received Best Team Manager award from Mr. Azim Premji. In 2007, Murali Gunji has joined as Team Leader in Swiss Bank. Later, he worked for many MNCs in several countries and in different positions.

However, his passion for civil engineering ever remained in his heart. And therefore, his ambition to serve the society with best quality homes made him take up the role of a builder.



MURALI KRISHNA GUNJI

B.TECH, MBA
MANAGING DIRECTOR



“ DREAM is not what you see in sleep,
DREAM is something which doesn't let you sleep.
—Dr. A.P.J Abdul Kalam. ”



SRIRAKSHA CONSTRUCTIONS

Flat No. 5/1, Block - A, Madhu Park Ridge,
Near Tipukhan Bridge, Bandlaguda Zagir,
Hashim Nagar, RR Dist, Hyderabad - 500 091

+91 89398 89112 / 82472 92574

mkgunji@gmail.com www.sriraksha.co.in

Architect & Engineers



PLANUM GROUP

MD.BASHIR

3-5-1111/5, Gupta Towers,
Kachiguda - Narayanguda
Road, Hyderabad, Telengana.
+91 92461 62945

Make the move for better life

